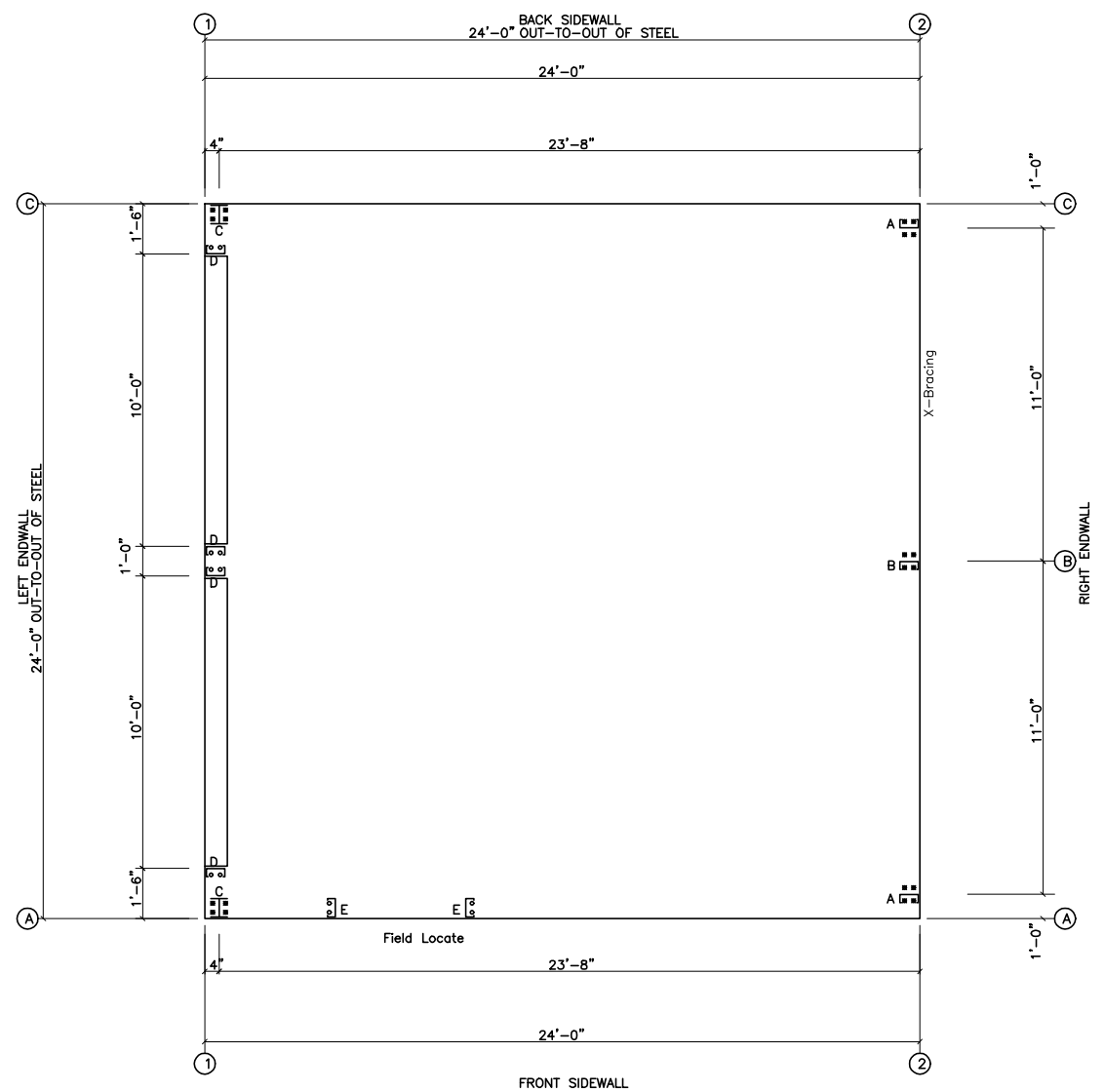


X242410-3

○ Dia= 5/8"  
 ⊗ Dia= 3/4"



ANCHOR BOLT PLAN  
 NOTE: All Base Plates @ 100'-0" (U.N.)

GENERAL NOTES

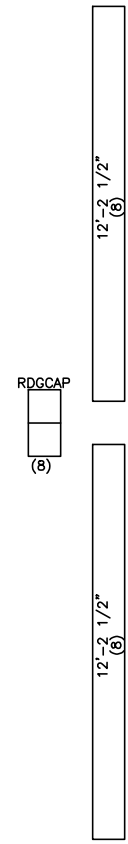
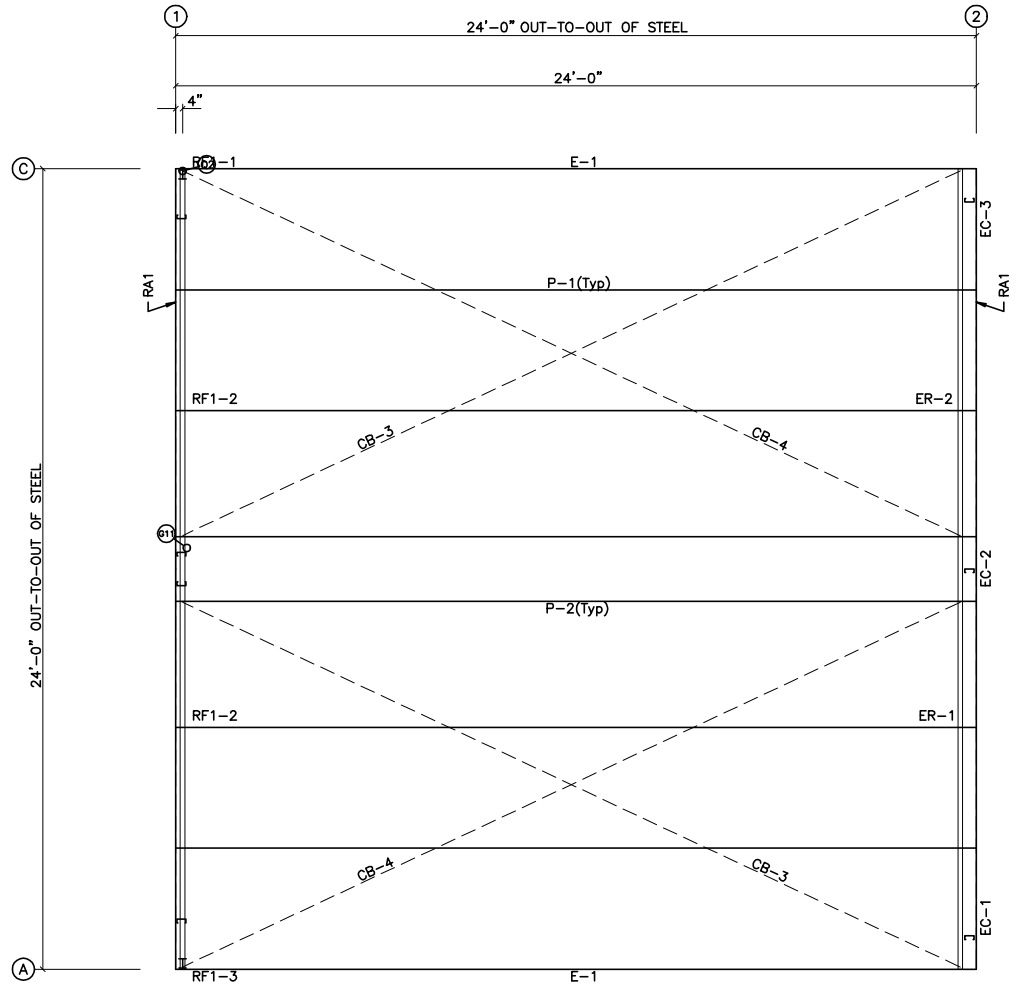
These Drawings Are Not To Scale.  
 Pinnacle's Steel Line Is Shown. A Sheeting Notch Or Brick Ledge,  
 If Used, Must Be Added To Determine The Out Of Concrete.

ISSUE	DESCRIPTION	DATE	MARK
P	PRELIMINARY	3/ 5/15	



DESCRIPTION:	ANCHOR BOLT PLAN		
CUSTOMER:			
LOCATION:			
Detailer	MBS	Checker	JC
Job No.	X242410-	Sheet	Issue
			P

PO BOX 1268 - CABOT, AR 72023 (501) 941-3929



ROOF SHEETING  
 PANELS: 26 Ga. 6PBR Galvalume

ROOF FRAMING PLAN

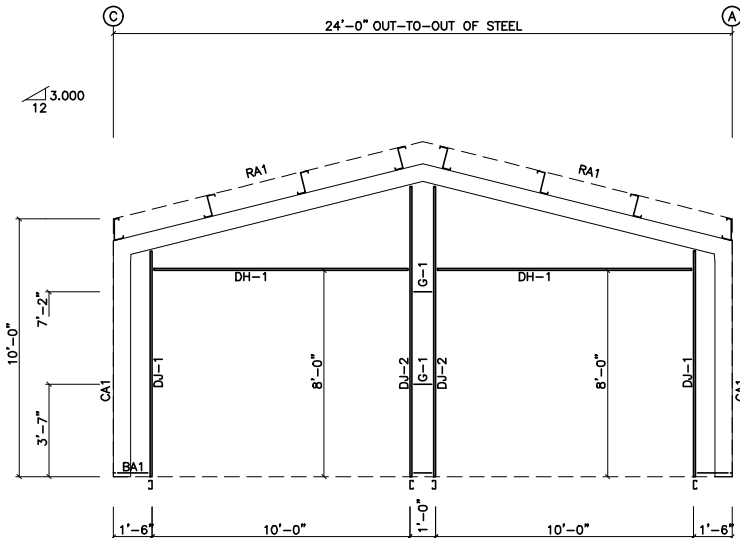
ISSUE	DESCRIPTION	DATE	MARK
P	PRELIMINARY	3/ 5/15	



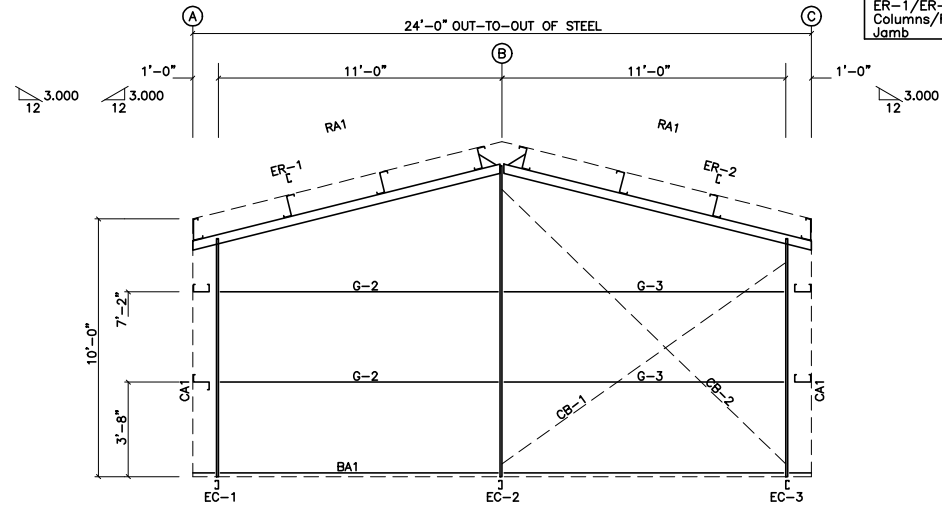
DESCRIPTION:	ROOF FRAMING		
CUSTOMER:			
LOCATION:			
Detailer	MBS	Checker	JC
Job No.	X242410-	Sheet	Issue
			P



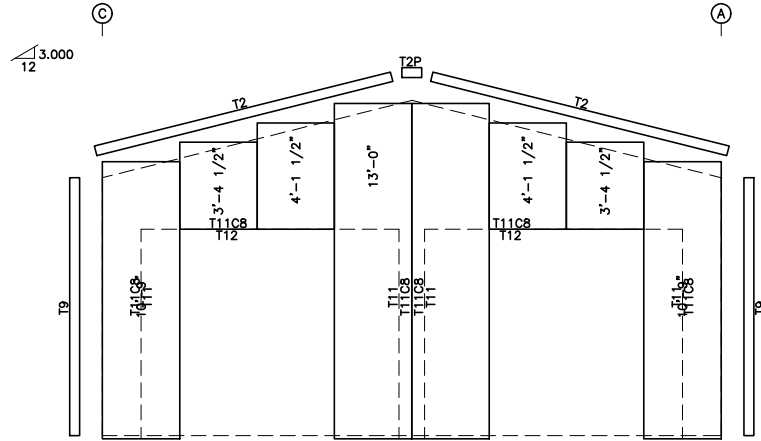
BOLT TABLE				
FRAME LINE 1 & 2				
LOCATION	QUAN	TYPE	DIA	LENGTH
ER-1/ER-2	4	A325	5/8"	1 1/2"
Columns/Raf	2	A325	5/8"	1 1/2"
Jamb	2	A325	5/8"	1 1/2"



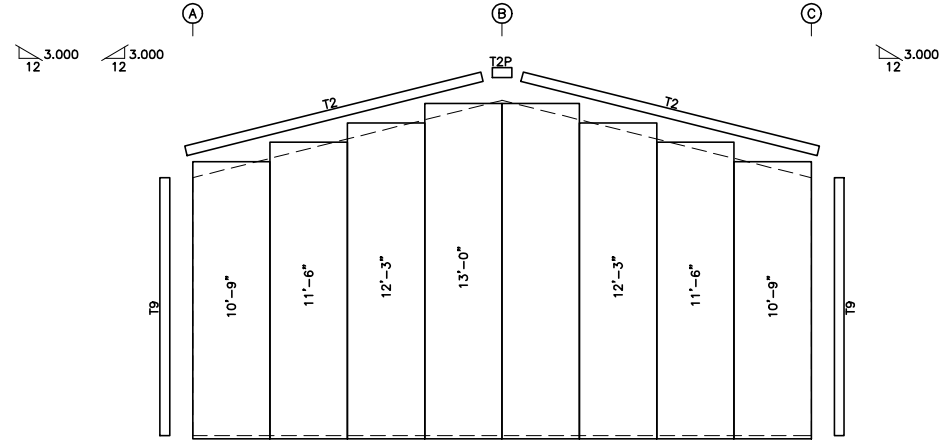
ENDWALL FRAMING: FRAME LINE 1



ENDWALL FRAMING: FRAME LINE 2



ENDWALL SHEETING & TRIM: FRAME LINE 1  
PANELS: 26 Ga. 6PBR - Sil Poly



ENDWALL SHEETING & TRIM: FRAME LINE 2  
PANELS: 26 Ga. 6PBR - Sil Poly

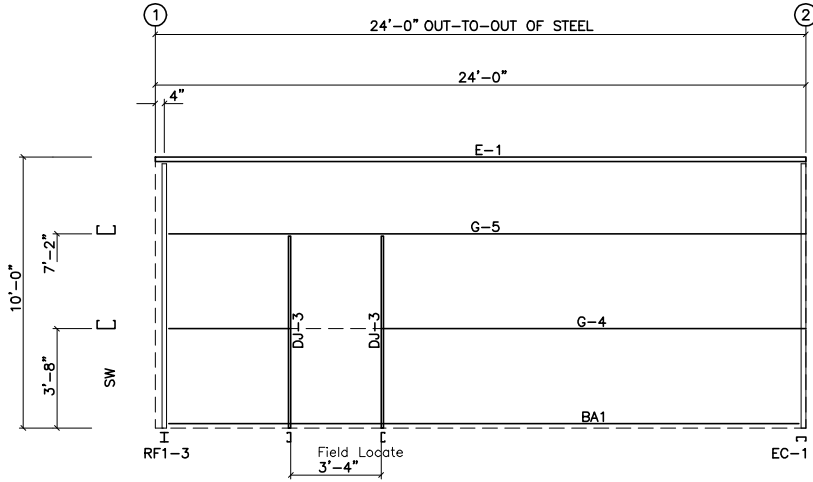
**GENERAL NOTES:**  
 1. Pinnacle standard trim lap is 3 inches max.  
 2. Pinnacle pre-cuts wall panels at factory located openings as required.  
 3. Slot girts in field for cable passage at flush walls as required.

ISSUE	DESCRIPTION	DATE	MARK
P	PRELIMINARY	3/ 5/15	

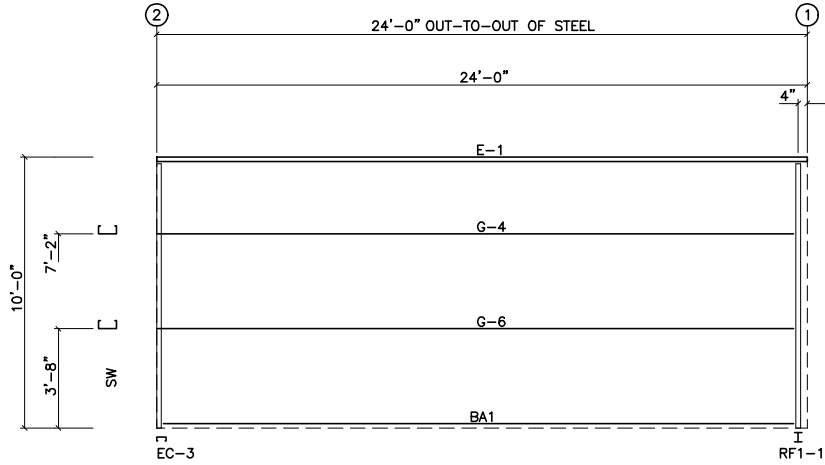


DESCRIPTION:	ENDWALL FRAMING		
CUSTOMER:			
LOCATION:			
Detailer	MBS	Checker	JC
Job No.	X242410	Sheet	Issue
			P

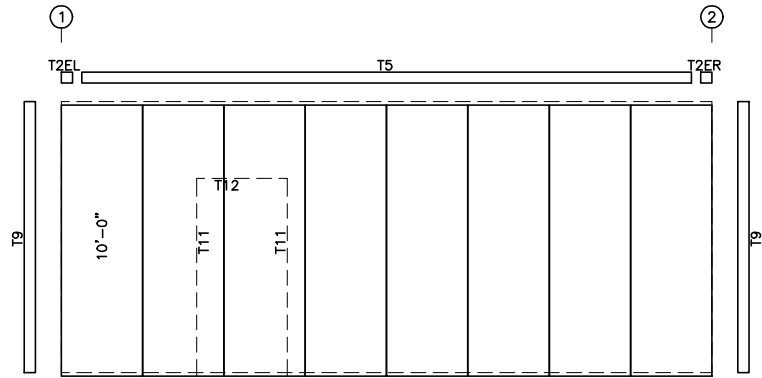
PO BOX 1268 - CABOT, AR 72023 (501) 941-3929



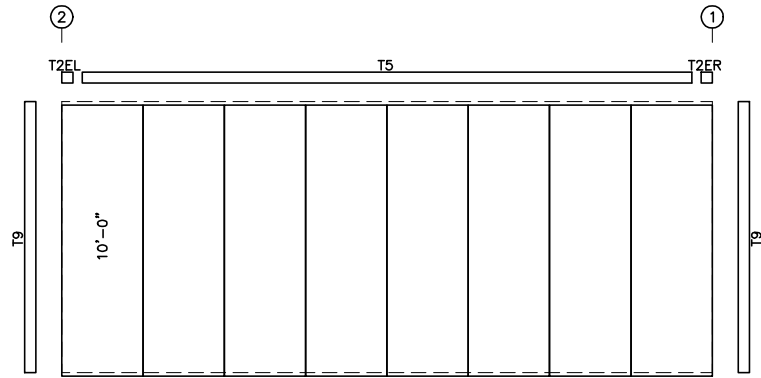
SIDEWALL FRAMING: FRAME LINE A



SIDEWALL FRAMING: FRAME LINE C



SIDEWALL SHEETING & TRIM: FRAME LINE A  
PANELS: 26 Ga. 6PBR - Sil Poly



SIDEWALL SHEETING & TRIM: FRAME LINE C  
PANELS: 26 Ga. 6PBR - Sil Poly

GENERAL NOTES:

1. Pinnacle standard trim lap is 3 inches max.
2. Pinnacle pre-cuts wall panels at factory located openings as required.
3. Slot girts in field for cable passage at flush walls as required.

ISSUE	DESCRIPTION	DATE	MARK
P	PRELIMINARY	3/ 5/15	



DESCRIPTION:	SIDEWALL FRAMING		
CUSTOMER:			
LOCATION:			
Detailer	MBS	Checker	JC
Job No.	X242410-	Sheet	Issue
			P

PO BOX 1268 - CABOT, AR 72023 (501) 941-3929